

ARBO Shield Pro®

CLASS B W1 BREATHER MEMBRANE

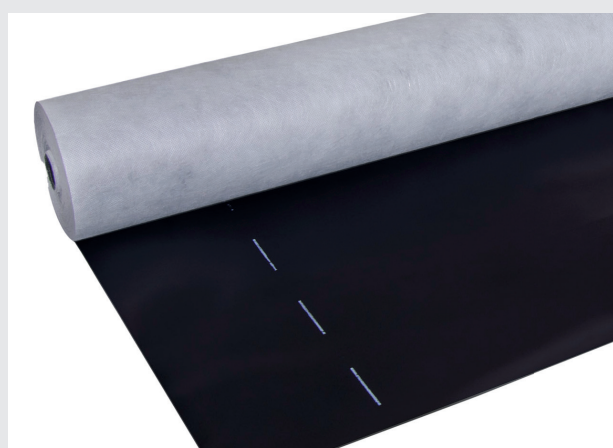
ARBO® Façade Solutions (ARBO FS) is the new name for a ground-breaking initiative from ARBO, one of the longest established names in UK construction materials.

ARBOShield Pro® Class B W1 Breather Membrane is an extremely vapour permeable wall membrane with Class B-s1,d0 fire classification.

Main Applications

ARBOShield Pro Class B W1 Breather Membrane is suitable for all light steel frame/SFS type walling applications, especially suited to high-rise and high-risk buildings such as schools, hospitals, care homes and residential blocks, helping to reduce the risk of fire spread. ARBOShield Pro Class B W1 Breather Membrane is also suitable for modular off-site construction. The composition of ARBOShield Pro Class B W1 Breather Membrane helps limit the spread of fire across a façade with limited risk of smoke or burning droplets in a fire situation. ARBOShield Pro Class B W1 Breather Membrane can be installed onto any Class A rated substrate.

For further details, contact ARBO Technical Services techservices@ccm-europe.com



Size	
Thickness	0.43mm
Roll Width	1200mm
Roll Length	35m

ARBOSHIELD PRO CLASS B W1 BREATHER MEMBRANE

Fixing Instructions

Unroll ARBOShield Pro Class B W1 Breather Membrane and fix directly to the sheathing or insulation. ARBOShield Pro Class B W1 Breather Membrane should be secured to the substrate using the appropriate fixings. Fixings should be no more than 600mm horizontally and 500mm vertically. Ensure stainless steel staples are used. On SFS substrates, the membrane should be mechanically secured with an appropriate fixing that features an EDPM type washer.

All laps around perimeter edges should be sealed using ARBOShield Pro Class B High Tack adhesive tape. Vertically, the membrane should overlap by at least 150mm and with the joints in a staggered pattern. ARBOShield Pro Class B W1 Breather Membrane should be installed with at least a 100mm lap horizontally starting at the bottom of the panel and working upwards to ensure the upper layer covers the lower layer, thus protecting the substrate from water run-off.

Fixing brackets for cladding/wall ties should be installed as per manufacturers' instructions and care should be taken around the interface between the Breather Membrane and fixing bracket. Where cavity barriers are installed in the horizontal position ARBOShield Pro Class B W1 Breather Membrane should be lapped over the DPC tray to allow water run-off.

When using ARBOShield ProClass B W1 Breather Membrane as the external airtightness layer, overlaps and penetrations through the Breather Membrane should be sealed using ARBOShield Pro Class B black membrane sealing tape.

The composition of ARBOShield Pro Class B W1 Breather Membrane provides the Breather Membrane with a high level of UV resistance and therefore a long exposure time in both summer and winter, without impacting product performance.

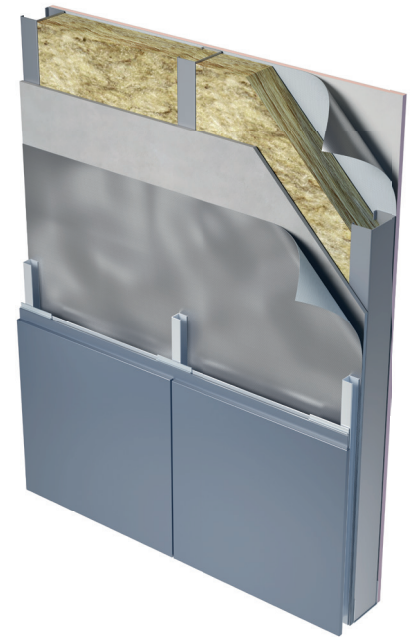
Care should be administered during installation to prevent any damage to the Breather Membrane. Small puncture areas less than 50mm can be repaired using ARBOShield Pro Class B black membrane sealing tape. Should the puncture or tear exceed 50mm then the repair should be made using new Breather Membrane and taping around the inserted section.

Storage

ARBOShield Pro Class B W1 Breather Membrane should be stored in cool, dry conditions in an upright position.

Health and Safety

All relevant standards should be observed on site, including manual handling and working at height.



Associated Products System Components

ARBOShield Pro Class A W1 Breather Membrane
ARBOShield Pro Class A Air & Vapour Control Layer
ARBOShield Pro External Perimeter Class A Membrane (EPAM®)
ARBOShield Pro Class A High-Tack Sealing Tapes

Ancillary Components

ARBO AR240 Class B Expansion Foam.
ARBO Intumescent and Fire-Resistant Mastics and Sealants

ARBOSHIELD PRO CLASS B W1 BREATHER MEMBRANE

Technical Data			
Product	Standard	Description	Performance
ARBOShield Pro® Class B W1 Breather Membrane	EN 13501	Reaction to Fire	B2-s1,d0*
	EN 13859-1	Resistance to Water Penetration	Class W1
	EN 13859-1	Tensile Strength MD	200 N/50mm BS EN 12311-1
	EN 13859-1	Tensile Strength CD	140 N/50mm BS EN 12311-1
	EN 13859-1	Flexibility at Low Temperature	-40 °C
	ISO 12572	Water Vapour Transmission	0.07sd
	EN 13859-1	Resistance to Nail Tearing MD	120 N BS EN 12310-1
	EN 13859-1	Resistance to Nail Tearing CD	140 N BS EN 12310-1

Note

*ARBOShield Pro Class B W1 breather membrane must be installed onto a Class A rated substrate to maintain its Class B fire performance.

Important: The information in this leaflet is given in good faith and based on results gained from experience and tests. However, all recommendations or suggestions are made without guarantee since the conditions of use are beyond our control. It is the user and specifier's responsibility to ensure ARBO product is suitable for the intended use: consult ARBO Technical Services for specific advice. Goods are supplied subject to the Company's terms and conditions of sales, a copy of which is available on request.



CARLISLE® Adshead Ratcliffe & Co. Ltd

United Kingdom
Derby Road | Belper

Derbyshire
DE56 1WJ

T +44 (0)1773 826661
F +44 (0)1773 821215

E info.arbo@ccm-europe.com
www.arbo.co.uk

